

XLCalendar User Manual

Version 1.7

2009-09

Copyright© 2006-2009 LJZsoft Corporation

All rights reserved

Contents

CHAPTER 1 INTRODUCTION.....	1
CHAPTER 2 INSTALLATION.....	3
2.1 SOFTWARE REQUIREMENTS.....	3
2.2 INSTALLING XLCALNDAR.....	3
2.3 UNINSTALLING XLCALNDAR.....	3
CHAPTER 3 QUICK START.....	4
CHAPTER 4 DIRECTORIES AND FILES.....	6
CHAPTER 5 CALENDAR TEMPLATES AND PARAMETERS.....	7
5.1 ABOUT CALENDAR TEMPLATES.....	7
5.2 CREATING A WORKSHEET FOR MONTHLY CALENDAR.....	7
5.3 CREATING A WORKSHEET FOR YEARLY CALENDAR.....	8
5.4 ABOUT PARAMETERS.....	9
5.5 PARAMETERS FOR MONTHLY CALENDAR.....	10
5.6 PARAMETERS FOR YEARLY CALENDAR.....	12
CHAPTER 6 FILE FORMATS.....	15
6.1 PARAMETER FILES.....	15
6.1.1 <i>About Parameter Files</i>	15
6.1.2 <i>[Monthly Calendar] Section</i>	15
6.1.3 <i>[Yearly Calendar] Section</i>	18
6.2 HOLIDAY FILES.....	22
6.3 XLCALNDAR.INI.....	23
6.3.1 <i>About XLCalendar.ini</i>	23
6.3.2 <i>[Environment] Section</i>	23
6.3.3 <i>[Monthly Calendar] Section</i>	24

6.3.4 [Yearly Calendar] Section	26
6.3.5 [MonthName] Section	29
6.3.6 [WeekdayName] Section	29
CHAPTER 7 CUSTOMIZING CALENDARS	31
7.1 MODIFYING CALENDAR PARAMETERS	31
7.2 MODIFYING CALENDAR TEMPLATES	31
7.3 ADDING YOUR OWN CALENDARS	31
7.4 ADDING YOUR HOLIDAY FILES	32
7.5 ADDING MONTH NAMES AND WEEKDAY NAMES	32
CHAPTER 8 LICENSE AND SUPPORT	33
8.1 LICENSE	33
8.2 SUPPORT AND CONTACT	34

Chapter 1 Introduction

XLCalendar is a calendar generator for Microsoft Excel that outputs calendars in Microsoft Excel spreadsheet format. Using XLCalendar, you can easily make various kinds of perpetual calendars, and custom calendars in your own language, holidays and styles.

XLCalendar includes the following features:

- **Outputting calendars in Microsoft Excel spreadsheet format**

Use Microsoft Excel to make calendars, and output calendars in Microsoft Excel spreadsheet format. It is easy to use, powerful and flexible.

- **Supporting various kinds of calendars**

Using XLCalendar, you can make various kinds of perpetual calendars. For example, monthly calendar on multiple worksheets, yearly calendar on one worksheet. The yearly calendar can be used with various month layouts, such as the 1x12 month layout, 2x6 month layout, 3x4 month layout and 4x3 month layout.

- **Customizing your own calendars**

You can make calendars in your own language, formats, layouts and styles, add your own holidays, birthdays, anniversaries, and other special events, and add the month name, weekday name that you like.

- **Supporting various holidays and special events**

XLCalendar supports numerous holidays, such as Christmas, Easter, Thanksgiving, and Labor Day. It supports various holidays for different countries, such as United States of America, United Kingdom, Canada and Australia. You can represent holidays using day (such as Feb 14) or weekday (such as the first Monday in Oct).

- **Supporting week number**

You can add week number in calendars. XLCalendar supports the USA week date system, ISO week date system and other week date system.

- **Two years in one calendar**

You can combine two years in one calendar. For example, you can create an educational school calendar starting with August and ending with June.

- **Designing calendar directly in Microsoft Excel**

XLCalendar is a template-based calendar tool. All formatting is done directly in Microsoft Excel. You can take full advantage of Microsoft Excel including cell

formatting, conditional formatting, formulas, drawing and pictures, page setup, headers and footers, preview and printing, VBA, and more.

Chapter 2 Installation

2.1 Software Requirements

Microsoft Windows 95, Windows 98, Windows NT, Windows 2000, Windows XP, Windows 2003, Windows Vista or later.

Microsoft Excel 97/98, Excel 2000, Excel XP, Excel 2003 or later.

2.2 Installing XLCalendar

Run installation program, and follow the instructions to complete XLCalendar installation. For Windows Vista, the data folder should be different from the application folder.

If you don't have Microsoft Excel installed, please install it first.

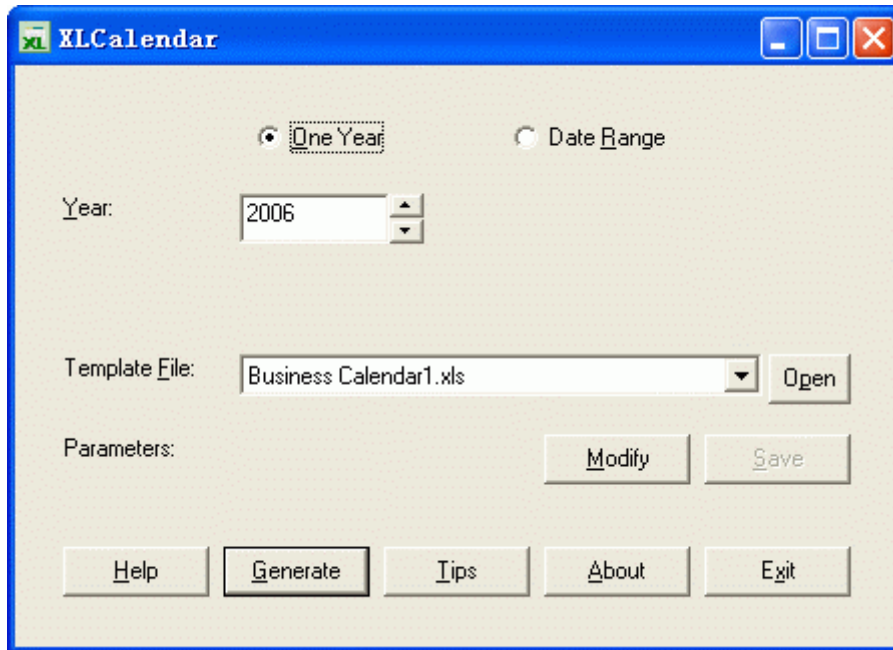
If your environment is Windows 95/98 and Excel 97, and you don't have VB6.0 run-time files installed, please install it. For Windows 2000, Windows XP, Windows 2003 and Excel 2000 or later, you do not need to install VB6.0 run-time files because they are included in OS and Excel. To install VB6.0 run-time files, just run vbrun60sp5.exe, and follow the instructions.

2.3 Uninstalling XLCalendar

1. Quit XLCalendar.
2. Double-click the **Add/Remove Programs** icon in the Windows Control Panel.
3. Do one of the following:
 - For Windows 2000, Windows XP and Windows 2003 Edition:
Click **XLCalendar** in the **Currently Installed Programs** box, and then click the **Change/Remove** button.
 - For Windows 98 and Windows NT 4.0:
Click **XLCalendar** on the **Install/Uninstall** tab, and then click the **Add/Remove** button.
4. Follow the instructions on the screen to complete uninstalling the program.

Chapter 3 Quick Start

Below is a screen shot of the XLCalendar interface followed by descriptions of each of the different objects.



One Year: Select the calendar including one entire year.

Date Range: Select the calendar combining two years.

Year: Appears when you select **One Year** button. Input a year.

Start Year and Month: Appears when you select **Date Range** button. Input the start year and month.

End Year and Month: Appears when you select **Date Range** button. Input the end year and month.

Template File: Select a calendar template file.

Open: Open the calendar template file using Microsoft Excel.

Modify: Open a dialog box allowing you to modify the parameters for the calendar template file.

Save: Save the parameters for the calendar template file.

Help: Open the help file.

Generate: Generate a calendar in Microsoft Excel spreadsheet format, and open the calendar.

Tips: Open Tip of the Day dialog box.

About: Open about dialog box, display the name and version of the product.

To make a calendar with XLCalendar, you should input a year, select a calendar template file, and simply click **Generate** button.

Chapter 4 Directories and Files

After XLCalendar is installed, some directories and files are created. You can add your own calendar template files and holiday files.

Directory	Description
{data}\holiday	Contains the holiday files.
{data}\output	Contains the calendar files (.xls;.xlsx) generated by XLCalendar.
{data}\template	Contains the calendar template files (.xls;.xlsx) and the calendar parameter files (.ini). The calendar parameter file has a same base name as the calendar template file.

{data} is the path of the data folder. You can select the data folder when you install XLCalendar. By default, the data folder is under the Application Data folder of All Users. If you install XLCalendar without administrative privileges, the data folder is under the Application Data folder of the current user. The data folder is usually at:

Windows 95/98: C:\windows\All Users\Application Data\LJZsoft\XLCalendar

Windows NT: C:\WinNT\Profiles\All Users\Application Data\LJZsoft\XLCalendar

Windows 2000/XP: C:\Documents and Settings\All Users\Application Data\LJZsoft\XLCalendar

Windows Vista: C:\ProgramData\LJZsoft\XLCalendar

Chapter 5 Calendar Templates and Parameters

5.1 About Calendar Templates

To make a calendar using XLCalendar, you must select a calendar template file. The calendar template file is a Microsoft Excel workbook that defines the layouts, formats and styles of the calendar. For example, in the calendar template file, you can define the column width and row height, input title or description, set the font, size, color or borders, and insert pictures. Based on the calendar template file, XLCalendar will put date, holidays and others into the calendar.

XLCalendar supports a monthly calendar and a yearly calendar. The monthly calendar is a calendar on multiple worksheets, each month per worksheet. The yearly calendar is a calendar that has full year on one worksheet.

5.2 Creating a Worksheet for Monthly Calendar

To make a monthly calendar, you need to create a worksheet for one month in the calendar template file. The format of the worksheet is the same as the format in the calendar. XLCalendar will copy the template worksheet to 12 worksheets, one worksheet for one month, and add the calendar information of one month into each worksheet.

The worksheet for monthly calendar in the calendar template:

	A	B	C	D	E	F	G	H	I	J	K	L	M	N	O	P	Q	R	S	T	U	V
2	JANUARY 2006																					
3																						
4																						
5	SUNDAY MONDAY TUESDAY WEDNESDAY THURSDAY FRIDAY SATURDAY																					
6																						
7																						
8																						
9																						
10																						
11																						
12																						
13																						
14																						
15																						
16																						
17																						
18																						
19																						
20																						
21																						
22																						
23																						
24																						

5.3 Creating a Worksheet for Yearly Calendar

To make a yearly calendar, you need to create a worksheet for one year in the calendar template file. The format of the worksheet is the same as the format in the calendar. XLCalendar will add the calendar information of one year into the worksheet.

In the worksheet for a yearly calendar, you should select a layout of months. XLCalendar supports 1x12 months, 2x6 months, 3x4 months, 4x3 months, 6x2 months and 12x1 months.

1	2
3	4
5	6
7	8
9	10
11	12

2x6 months layout

1	2	3
4	5	6
7	8	9
10	11	12

3x4 months layout

1	2	3	4
5	6	7	8
9	10	11	12

4x3 months layout

The worksheet for yearly calendar in the calendar template:

	A	B	C	D	E	F	G	H	I	J	K	L	M	N	O	P	Q	R	S	T	U	V	W	
2	2006 Yearly Calendar																							
3																								
4	1 January							2 February							3 March									
5	S	M	T	W	T	F	S	S	M	T	W	T	F	S	S	M	T	W	T	F	S			
6																								
7																								
8																								
9																								
10																								
11																								
12																								
13	4 April							5 May							6 June									
14	S	M	T	W	T	F	S	S	M	T	W	T	F	S	S	M	T	W	T	F	S			
15																								
16																								
17																								
18																								
19																								
20																								
21																								
22	7 July							8 August							9 September									
23	S	M	T	W	T	F	S	S	M	T	W	T	F	S	S	M	T	W	T	F	S			
24																								

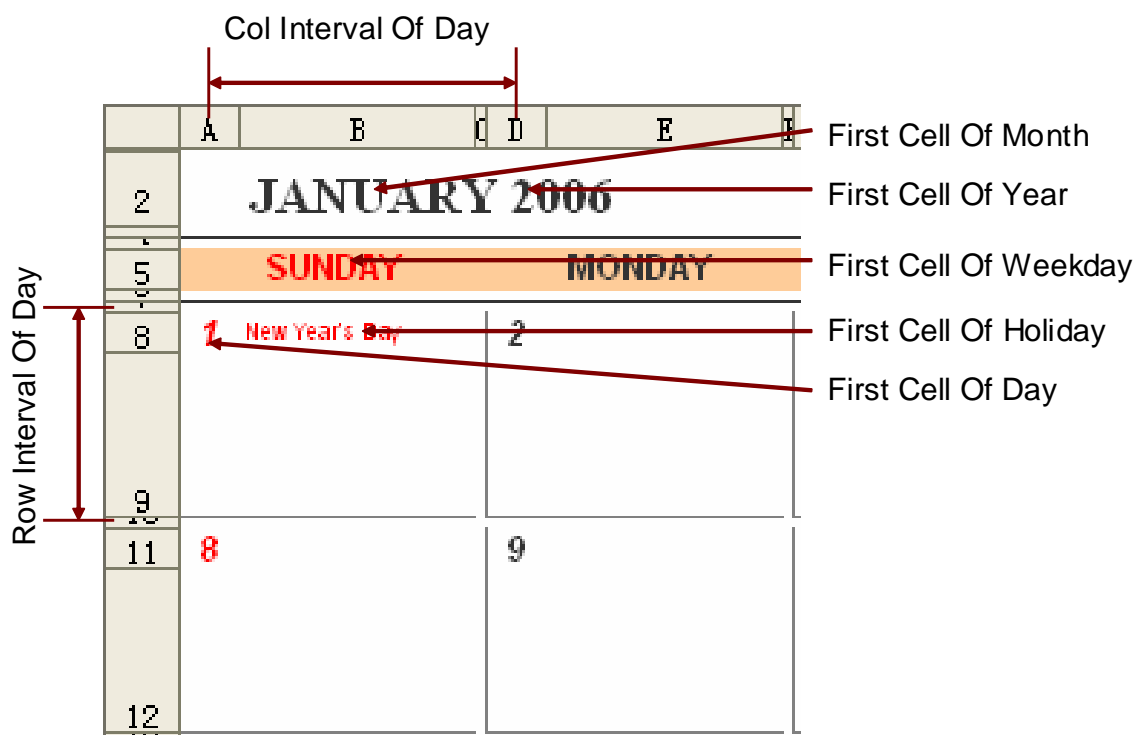
5.4 About Parameters

For each calendar template file, there are some parameters to tell XLCalendar how to output the calendar. The parameter file contains the parameters for a calendar template. The calendar parameter file has an “.ini” extension, is

located in the same directory as the template file, and has the same base name as the template file.

5.5 Parameters for Monthly Calendar

The parameters for a monthly calendar:



Output Monthly Calendar: This parameter indicates whether XLCalendar will output the monthly calendar. Checked indicates outputting a monthly calendar. Unchecked indicates not outputting a monthly calendar.

Sheet Name: This parameter identifies the worksheet for a monthly calendar in the calendar template file. It is the name of the worksheet.

First Day of Week: This parameter specifies the first day of the week. A week can start on Sunday, Monday or other day.

First Cell of Day: This parameter specifies the position where the day of the month will be inserted. You just need to identify the first cell for the day. XLCalendar will compute the positions for each day.

Col Interval of Day: This parameter specifies the number of columns between two days.

Row Interval of Day: This parameter specifies the number of rows between two days or two weeks.

Output Name of Weekday: This parameter indicates whether XLCalendar will output the name of the weekday. Checked indicates outputting the name of

weekday. Unchecked indicates not outputting the name of the weekday.

First Cell of Weekday: This parameter specifies the position where the name of the weekday will be inserted. You just need to identify the first cell for the weekdays. XLCalendar will compute the positions for each weekday.

Weekday Name: This parameter specifies the weekday name. You can select the names you want. For example, you can use “Sunday, Monday, Tuesday...”, or “Sun, Mon, Tue...”

Output Week Number: This parameter indicates whether XLCalendar will output the week number. Checked indicates outputting the week number. Unchecked indicates not outputting the week number.

First Cell of Week Num: This parameter specifies the position where the week number will be inserted. You just need to identify the first cell for the week numbers. XLCalendar will compute the positions for each week number.

First Week Contains at least: This parameter specifies the days that the first week of year contains at least. You can select “1 day”, “4 days” or “7 days”. For USA, the first day of week starts at Sunday, and the first week of year contains at least 1 day. For ISO standard, the first day of week starts at Monday, and the first week of year contains at least 4 days.

Output Month: This parameter indicates whether XLCalendar will output the month. Checked indicates outputting the month. Unchecked indicates not outputting the month.

First Cell of Month: This parameter specifies the position where the month will be inserted. You just need to identify the cell for January. XLCalendar will compute the positions for each month.

Month Name: This parameter specifies the month name. You can select the names you want. For example, you can use “January, February, March...”, or “Jan, Feb, Mar...”

Output Year: This parameter indicates whether XLCalendar will output the year. Checked indicates outputting the year. Unchecked indicates not outputting the year.

First Cell of Year: This parameter specifies the position where the year will be inserted.

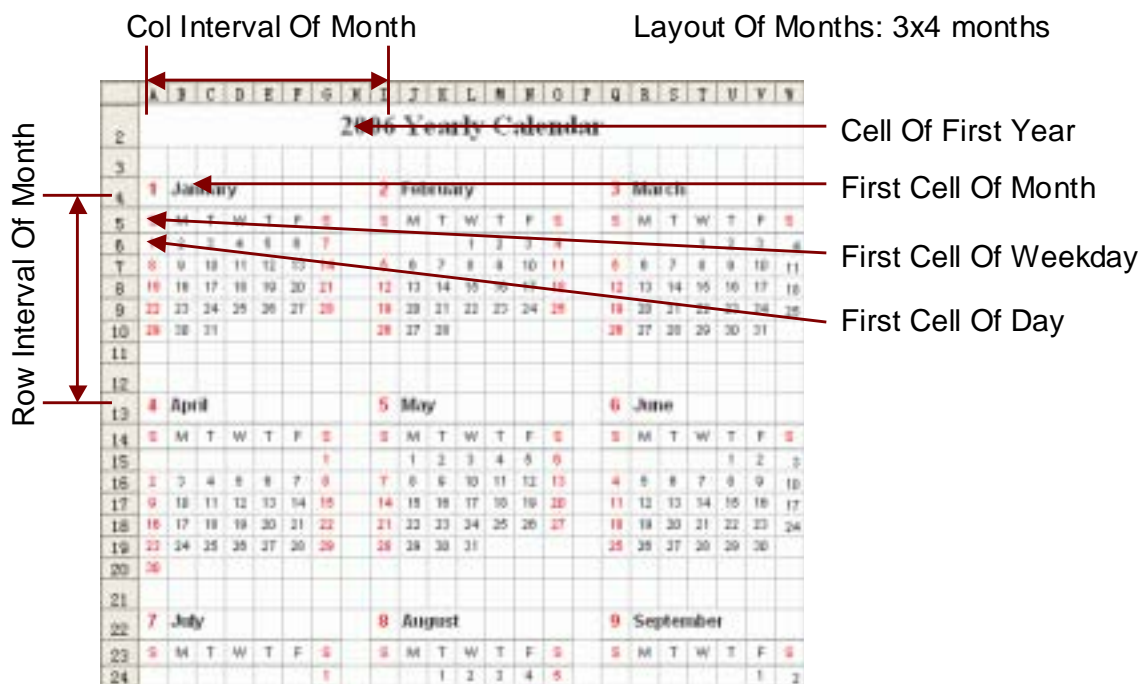
Output Holiday: This parameter indicates whether XLCalendar will output the holidays. Checked indicates outputting the holidays. Unchecked indicates not outputting the holidays.

First Cell of Holiday: This parameter specifies the position where the name of holiday will be inserted.

Multiple Holidays on the Same Day: This parameter specifies how to process holidays when there are multiple holidays on the same day. For example, you can choose “overwrite holiday with the last holiday”, or “put holidays into the next row or column”.

Holiday File: This parameter specifies the holiday file that contains the holidays you want to insert into the calendar. If you select “(Template)”, XLCalendar will get holidays from the parameter file. Otherwise it gets holidays from the file you selected.

5.6 Parameters for Yearly Calendar



The parameters for yearly calendar:

Output Yearly Calendar: This parameter indicates whether XLCalendar will output the yearly calendar. Checked indicates outputting yearly calendar. Unchecked indicates not outputting a yearly calendar.

Sheet Name: This parameter identifies the worksheet for yearly calendar in the calendar template file. It is the name of the worksheet.

First Day of Week: This parameter specifies the first day of the week. A week can start on Sunday, Monday or other day.

First Cell of Day: This parameter specifies the position where the day of the month will be inserted. You just need to identify the first cell of the day. XLCalendar will compute the positions for each day.

Col Interval of Day: This parameter specifies the number of columns between two days.

Row Interval of Day: This parameter specifies the number of rows between two days or two weeks.

Layout of Months: This parameter specifies the layout of months. For example, 2x6 months, 3x4 months or 4x3 months.

Col Interval of Month: This parameter specifies the number of columns between two months.

Row Interval of Month: This parameter specifies the number of rows between two months.

Output Name of Weekday: This parameter indicates whether XLCalendar will output the name of the weekday. Checked indicates outputting the name of the weekday. Unchecked indicates not outputting the name of the weekday.

First Cell of Weekday: This parameter specifies the position where the name of the weekday will be inserted. You just need to identify the first cell for the weekdays. XLCalendar will compute the positions for each weekday.

Weekday Name: This parameter specifies the weekday name. You can select the names you want. For example, "Sunday, Monday, Tuesday...", or "Sun, Mon, Tue..."

Output Week Number: This parameter indicates whether XLCalendar will output the week number. Checked indicates outputting the week number. Unchecked indicates not outputting the week number.

First Cell of Week Num: This parameter specifies the position where the week number will be inserted. You just need to identify the first cell for the week numbers. XLCalendar will compute the positions for each week number.

First Week Contains at least: This parameter specifies the days that the first week of year contains at least. You can select "1 day", "4 days" or "7 days". For USA, the first day of week starts at Sunday, and the first week of year contains at least 1 day. For ISO standard, the first day of week starts at Monday, and the first week of year contains at least 4 days.

Output Month: This parameter indicates whether XLCalendar will output the month. Checked indicates outputting the month. Unchecked indicates not outputting the month.

First Cell of Month: This parameter specifies the position where the month will be inserted. You just need to identify the cell for January. XLCalendar will compute the positions for each month.

Month Name: This parameter specifies the month name. You can select the

names you want. For example, “January, February, March...”, or “Jan, Feb, Mar...”

Output Year: This parameter indicates whether XLCalendar will output the year. Checked indicates outputting the year. Unchecked indicates not outputting the year.

Cell of First Year: This parameter specifies the position where the first year will be inserted.

Cell of Second Year: This parameter specifies the position where the second year will be inserted. If only one year, this parameter will be ignored.

Output Holiday: This parameter indicates whether XLCalendar will output the holidays. Checked indicates outputting the holidays. Unchecked indicates not outputting the holidays.

First Cell of Holiday: This parameter specifies the position where the name of holiday will be inserted.

Multiple Holidays on the Same Day: This parameter specifies how to process holidays when there are multiple holidays on the same day. For example, overwrite holiday with the last holiday, put holidays into the next row or column.

Holiday File: This parameter specifies the holiday file that contains the holidays you want to insert into the calendar. If you select “(Template)”, XLCalendar will get holidays from the parameter file. Or else, it gets holidays from the file you selected.

Chapter 6 File Formats

6.1 Parameter Files

6.1.1 About Parameter Files

The parameter file is an .INI file that contains some parameters for the calendar template file. These parameters instruct XLCalendar how to output the calendar. The calendar parameter file is located in the same directory as the template file, and has a same base name as the template file.

6.1.2 [Monthly Calendar] Section

The [Monthly Calendar] section contains the settings how to output monthly calendar.

Output=Y/N

This setting specifies whether to output the monthly calendar. If the value is Y, the monthly calendar will be used. If the value is N, the monthly calendar will not be used.

SheetName=<sheetname>

This setting specifies the name of the worksheet for the monthly calendar. <sheetname> value is the name of the worksheet.

FirstDayOfWeek=<firstdayofweek>

This setting specifies the first day of the week. "Sunday" or 0 means the week starts at Sunday. "Monday" or "1" means the week starts at Monday. "Tuesday" or "2" means the week starts at Tuesday...

FirstCellOfDay=<firstcellofday>

This setting specifies the position where the day of the month will be inserted. <firstcellofday> value is the first cell of day. XLCalendar will compute the positions for each day.

ColIntervalOfDay=<colintervalofday>

This setting specifies the number of columns between two days.

RowIntervalOfDay=<rowintervalofday>

This setting specifies the number of rows between two days or two weeks.

OutWeekday=Y/N

This setting specifies whether to output the name of weekday. If the value is Y, the name of weekday will be outputted. If the value is N, the name of weekday will not be used.

FirstCellOfWeekday=<firstcellofweekday>

This setting specifies the position where the name of weekday will be inserted. <firstcellofweekday> value is the first cell for the weekdays. XLCalendar will compute the positions for each weekday.

WeekdayName=<weekdayname>

This setting specifies the weekday name. <weekdayname> value is the list of the weekday name. For example, "Sunday, Monday, Tuesday, Wednesday, Thursday, Friday, Saturday".

OutWeekNumber=Y/N

This setting specifies whether to output the week number. If the value is Y, the week number will be outputted. If the value is N, the week number will not be used.

FirstCellOfWeekNumber=<firstcellofweeknumber>

This setting specifies the position where the week number will be inserted. <firstcellofweeknumber> value is the first cell for the week numbers. XLCalendar will compute the positions for each week number.

FirstWeekContainAtLeastDay=<firstweekcontainatleastday>

This setting specifies the days that the first week of year contains at least. <firstweekcontainatleastday> value can be 1, 4 or 7. "1" means the first week

of year contains at least 1 day. “4” means 4 days. “7” means 7 days. For USA, the first day of week starts at Sunday, and the first week of year contains at least 1 day. For ISO standard, the first day of week starts at Monday, and the first week of year contains at least 4 days.

OutMonth=Y/N

This setting specifies whether to output the month. If the value is Y, the month will be used. If the value is N, the month will not be used.

FirstCellOfMonth=<firstcellofmonth>

This setting specifies the position where the month will be inserted. <firstcellofmonth> value is the cell for January. XLCalendar will compute the positions for each month.

MonthName=<monthname>

This setting specifies the month name. <monthname> value is the list of the month name. For example, “Jan, Feb, Mar, Apr, May, Jun, Jul, Aug, Sep, Oct, Nov, Dec”.

OutYear=Y/N

This setting specifies whether to output the year. If the value is Y, the year will be used. If the value is N, the year will not be used.

FirstCellOfYear=<firstcellofyear>

This setting specifies the position where the year will be inserted.

OutHoliday=Y/N

This setting specifies whether to output the holidays. If the value is Y, the holidays will be used. If the value is N, the holidays will not be used.

FirstCellOfHoliday=<firstcellofholiday>

This setting specifies the position where the name of holiday will be inserted.

MultiHolidays=<multiholidays>

This setting specifies how to process holidays when there are multiple holidays on the same day. If the value is 0, the holiday will be overwritten with the last one. You only get the last one. If the value is 1, you will get all holidays on the same day. The others on the same day will be put into the next rows. If the value is 2, the others on the same day will be put into the next columns.

Holiday1=<date1>,<type1>,<name1>

Holiday2=<date2>,<type2>,<name2>

Holiday3=<date3>,<type3>,<name3>

.....

These settings specify the holidays you want to use in the calendar. Each entry specifies a holiday. <type1> is the type of the holiday. If <type1> value is "day" or "", <date1> is the month and the day. For example, "0101" means January 1. If <type1> value is "sunday", "monday", "tuesday"... , <date1> represents the month and the weekday of the month. If the weekday of the month is greater than or equal to 5, XLCalendar will count backwards. If the weekday of month is 5, 6, 7, 8, it represents the first, second, third, fourth weekday of month from the end of month. For example, "1004,thursday" means the fourth occurrence of Thursday in October, "0506,monday" means the second Monday from the end of month in May. If <type1> value is "Easter", it means a holiday that relates to Easter. <date1> means the days of the interval. It can be positive (the days after Easter) or negative (the days before Easter). For example, "-2,easter" means 2 days before Easter. < name1 > is the name of the holiday.

6.1.3 [Yearly Calendar] Section

The [Yearly Calendar] section contains the settings how to output a yearly calendar.

Output=Y/N

This setting specifies whether or not to output the yearly calendar. If the value is Y, the Yearly calendar will be used. If the value is N, the yearly calendar will not be used.

SheetName=<sheetname>

This setting specifies the name of the worksheet for the yearly calendar. <sheetname> value is the name of the worksheet.

FirstDayOfWeek=<firstdayofweek>

This setting specifies the first day of the week. "Sunday" or 0 means the week starts at Sunday. "Monday" or "1" means the week starts at Monday. "Tuesday" or "2" means the week starts at Tuesday...

MonthLayout=<monthlayout>

This setting specifies the layout of months. For example, 2x6 months, 3x4 months or 4x3 months. <monthlayout> value is the number between 1 and 12 representing the layout of months. 1 represents 1x12 months layout, 2 represents 2x6 months layout, 3 represents 3x4 months layout, 4 represents 4x3 months layout, 6 represents 6x2 months layout, and 12 represents 12x1 months layout.

ColIntervalOfMonth=<colintervalofmonth>

This setting specifies the number of columns between two months.

RowIntervalOfMonth=<rowintervalofmonth>

This setting specifies the number of rows between two months.

FirstCellOfDay=<firstcellofday>

This setting specifies the position where the day of the month will be inserted. <firstcellofday> value is the first cell of day. XLCalendar will compute the positions for each day.

ColIntervalOfDay=<colintervalofday>

This setting specifies the number of columns between two days.

RowIntervalOfDay=<rowintervalofday>

This setting specifies the number of rows between two days or two weeks.

OutWeekday=Y/N

This setting specifies whether to output the name of weekday. If the value is Y, the name of weekday will be used. If the value is N, the name of weekday will not be used.

FirstCellOfWeekday=<firstcellofweekday>

This setting specifies the position where the name of weekday will be inserted. <firstcellofweekday> value is the first cell for the weekdays. XLCalendar will compute the positions for each weekday.

WeekdayName=<weekdayname>

This setting specifies the weekday name. <weekdayname> value is the list of the weekday name. For example, "Sunday, Monday, Tuesday, Wednesday, Thursday, Friday, Saturday".

OutWeekNumber=Y/N

This setting specifies whether to output the week number. If the value is Y, the week number will be outputted. If the value is N, the week number will not be used.

FirstCellOfWeekNumber=<firstcellofweeknumber>

This setting specifies the position where the week number will be inserted. <firstcellofweeknumber> value is the first cell for the week numbers. XLCalendar will compute the positions for each week number.

FirstWeekContainAtLeastDay=<firstweekcontainatleastday>

This setting specifies the days that the first week of year contains at least. <firstweekcontainatleastday> value can be 1, 4 or 7. "1" means the first week of year contains at least 1 day. "4" means 4 days. "7" means 7 days. For USA, the first day of week starts at Sunday, and the first week of year contains at least 1 day. For ISO standard, the first day of week starts at Monday, and the first week of year contains at least 4 days.

OutMonth=Y/N

This setting specifies whether to output the month. If the value is Y, the month

will be used. If the value is N, the month will not be used.

FirstCellOfMonth=<firstcellofmonth>

This setting specifies the position where the month will be inserted. <firstcellofmonth> value is the cell for January. XLCalendar will compute the positions for each month.

MonthName=<monthname>

This setting specifies the month name. <monthname> value is the list of the name of the month. For example, "Jan, Feb, Mar, Apr, May, Jun, Jul, Aug, Sep, Oct, Nov, Dec".

OutYear=Y/N

This setting specifies whether to output the year. If the value is Y, the year will be used. If the value is N, the year will not be used.

CellOfFirstYear=<celloffirstyear>

This setting specifies the position where the first year will be inserted.

CellOfSecondYear=<celloffsecondyear>

This setting specifies the position where the second year will be inserted. If only one year, this setting will be ignored.

OutHoliday=Y/N

This setting specifies whether to output the holidays. If the value is Y, the holidays will be used. If the value is N, the holidays will not be used.

FirstCellOfHoliday=<firstcelloffholiday>

This setting specifies the position where the name of holiday will be inserted.

MultiHolidays=<multiholidays>

This setting specifies how to process holidays when there are multiple holidays on the same day. If the value is 0, the holiday will be overwritten with the last

one. You only get the last one. If the value is 1, you will get all holidays on the same day. The others on the same day will be put into the next rows. If the value is 2, the others on the same day will be put into the next columns.

Holiday1=<date1>,<type1>,<name1>

Holiday2=<date2>,<type2>,<name2>

Holiday3=<date3>,<type3>,<name3>

.....

These settings specify the holidays you want to use in the calendar. Each entry specifies a holiday. <type1> is the type of the holiday. If <type1> value is "day" or "", <date1> is the month and the day. For example, "0101" means January 1. If <type1> value is "sunday", "monday", "tuesday"... , <date1> represents the month and the weekday of the month. If the weekday of the month is greater than or equal to 5, XLCalendar will count backwards. If the weekday of month is 5, 6, 7, 8, it represents the first, second, third, fourth weekday of month from the end of month. For example, "1004,thursday" means the fourth occurrence of Thursday in October, "0506,monday" means the second Monday from the end of month in May. If <type1> value is "Easter", it means a holiday that relates to Easter. <date1> means the days of the interval. It can be positive (the days after Easter) or negative (the days before Easter). For example, "-2,easter" means 2 days before Easter. <name1> is the name of the holiday.

6.2 Holiday Files

The holiday files are text files that contain the information of holidays. The folder of the holiday files is the holiday under the data folder. For more detail information about the data folder, refer to "Directories and Files" in this document.

The layout of a holiday file is as the following:

<date1>,<type1>,<name1>

<date2>,<type2>,<name2>

<date3>,<type3>,<name3>

.....

Each line specifies a holiday. <type1> is the type of the holiday. If <type1> value is "day" or "", <date1> is the month and the day. For example, "0101" means January 1. If <type1> value is "sunday", "monday", "tuesday"... , <date1> represents the month and the weekday of the month. If the weekday of the month is greater than or equal to 5, XLCalendar will count backwards. If

the weekday of month is 5, 6, 7, 8, it represents the first, second, third, fourth weekday of month from the end of month. For example, "1004,thursday" means the fourth occurrence of Thursday in October, "0506,monday" means the second Monday from the end of month in May. If <type1> value is "Easter", it means a holiday that relates to Easter. <date1> means the days of the interval. It can be positive (the days after Easter) or negative (the days before Easter). For example, "-2,easter" means 2 days before Easter. <name1> is the name of the holiday.

6.3 XLCalendar.ini

6.3.1 About XLCalendar.ini

XLCalendar.ini contains the settings and defaults of XLCalendar according to your preferences. XLCalendar.ini is under XLCalendar's working directory.

6.3.2 [Environment] Section

The [Environment] section contains the settings about the environment.

TemplatePath=<templatepath>

This setting specifies the path of the template files. <templatepath> value is the path of the template files.

OutputPath=<outputpath>

This setting specifies the path of the calendar files generated by XLCalendar. <outputpath> value is the path of the calendar files.

HolidayFilePath=<holidayfilepath>

This setting specifies the path of the holiday files. <holidayfilepath> value is the path of the holiday files.

ShowTips=Y/N

This setting specifies whether to show Tips on startup. If the value is Y, it will

show the Tips on startup. If the value is N, it will not show the Tips.

6.3.3 [Monthly Calendar] Section

The [Monthly Calendar] section contains the settings related to monthly calendar.

Output=Y/N

This setting specifies the default value whether XLCalendar will use the monthly calendar.

SheetName=<sheetname>

This setting specifies the default name of the worksheet for the monthly calendar.

FirstDayOfWeek=<firstdayofweek>

This setting specifies the default first day of the week.

FirstCellOfDay=<firstcellofday>

This setting specifies the default cell for the first cell of day.

ColIntervalOfDay=<colintervalofday>

This setting specifies the default value for the column interval of day.

RowIntervalOfDay=<rowintervalofday>

This setting specifies the default value for the row interval of day.

OutWeekday=Y/N

This setting specifies the default value whether XLCalendar will use the name of the weekday.

FirstCellOfWeekday=<firstcellofweekday>

This setting specifies the default cell for the first cell of the weekday.

WeekdayName=<weekdayname>

This setting specifies the default weekday name.

OutWeekNumber=Y/N

This setting specifies the default value whether XLCalendar will use the week number.

FirstCellOfWeekNumber=<firstcellofweeknumber>

This setting specifies the default cell for the first cell of the week number.

FirstWeekContainAtLeastDay=<firstweekcontainatleastday>

This setting specifies the default the days that the first week of year contains at least.

OutMonth=Y/N

This setting specifies the default value whether XLCalendar will use the month.

FirstCellOfMonth=<firstcellofmonth>

This setting specifies the default value for the first cell of the month.

MonthName=<monthname>

This setting specifies the default month name.

OutYear=Y/N

This setting specifies the default value whether XLCalendar will use the year.

FirstCellOfYear=<firstcellofyear>

This setting specifies the default cell for the first cell of the year.

OutHoliday=Y/N

This setting specifies the default value whether XLCalendar will use the holidays.

FirstCellOfHoliday=<firstcellofholiday>

This setting specifies the default cell for the first cell of the holiday.

MultiHolidays=<multiholidays>

This setting specifies the default value how to process holidays when there are multiple holidays on the same day.

HolidayFile=<holidayfile>

This setting specifies the default holiday file. <holidayfile> value is the name and path of the holiday file.

6.3.4 [Yearly Calendar] Section

The [Yearly Calendar] section contains the settings related to the yearly calendar.

Output=Y/N

This setting specifies the default value whether XLCalendar will use the yearly calendar.

SheetName=<sheetname>

This setting specifies the default name of the worksheet for the yearly calendar.

FirstDayOfWeek=<firstdayofweek>

This setting specifies the default first day of the week.

MonthLayout=<monthlayout>

This setting specifies the default layout of months.

ColIntervalOfMonth=<colintervalofmonth>

This setting specifies the default value for the column interval of the month.

RowIntervalOfMonth=<rowintervalofmonth>

This setting specifies the default value for the row interval of the month.

FirstCellOfDay=<firstcellofday>

This setting specifies the default cell for the first cell of the day.

ColIntervalOfDay=<colintervalofday>

This setting specifies the default value for the column interval of the day.

RowIntervalOfDay=<rowintervalofday>

This setting specifies the default value for the row interval of the day.

OutWeekday=Y/N

This setting specifies the default value whether XLCalendar will use the name of weekday.

FirstCellOfWeekday=<firstcellofweekday>

This setting specifies the default cell for the first cell of the weekday.

WeekdayName=<weekdayname>

This setting specifies the default weekday name.

OutWeekNumber=Y/N

This setting specifies the default value whether XLCalendar will use the week number.

FirstCellOfWeekNumber=<firstcellofweeknumber>

This setting specifies the default cell for the first cell of the week number.

FirstWeekContainAtLeastDay=<firstweekcontainatleastday>

This setting specifies the default the days that the first week of year contains at least.

OutMonth=Y/N

This setting specifies the default value whether XLCalendar will use the month.

FirstCellOfMonth=<firstcellofmonth>

This setting specifies the default value for the first cell of the month.

MonthName=<monthname>

This setting specifies the default month name.

OutYear=Y/N

This setting specifies the default value whether XLCalendar will use the year.

CellOfFirstYear=<celloffirstyear>

This setting specifies the default cell for the cell of the first year.

CellOfSecondYear=<celloffsecondyear>

This setting specifies the default cell for the cell of the second year.

OutHoliday=Y/N

This setting specifies the default value whether XLCalendar will output the holidays.

FirstCellOfHoliday=<firstcelloffholiday>

This setting specifies the default cell for the first cell of the holiday.

MultiHolidays=<multiholidays>

This setting specifies the default value how to process holidays when there are multiple holidays on the same day.

HolidayFile=<holidayfile>

This setting specifies the default holiday file. <holidayfile> value is the name and path of the holiday file.

6.3.5 [MonthName] Section

The [MonthName] section contains the settings about the name of the month.

Count=<count>

This setting specifies how many name lists of months defined in XLCalendar.ini. <count> value is a number.

Name1=<name1>

Name2=<name2>

Name3=<name3>

.....

These settings specify the month name. <name1> value is the first name list of the month name. <name2> value is the second name list of the month name.....For example, "Jan, Feb, Mar, Apr, May, Jun, Jul, Aug, Sep, Oct, Nov, Dec".

6.3.6 [WeekdayName] Section

The [WeekdayName] section contains the settings about the names of weekdays.

Count=<count>

This setting specifies how many name lists of weekdays defined in XLCalendar.ini. <count> value is a number.

Name1=<name1>

Name2=<name2>

Name3=<name3>

.....

These settings specify the weekday name. <name1> value is the first name list of the weekday name. <name2> value is the second name list of the weekday name.....For example, "Sunday, Monday, Tuesday, Wednesday, Thursday, Friday, Saturday".

Chapter 7 Customizing Calendars

7.1 Modifying calendar parameters

1. In XLCalendar, select the calendar template file, and press **Modify** button. The **Modify Parameters** dialog box appears.
2. In the **Modify Parameters** dialog box, you can modify the parameters for monthly calendar or yearly calendar.
 - (1) Click the **Monthly Calendar** tab, change the parameters for monthly calendar. Press **Change** button to change holidays for monthly calendar.
 - (2) Click the **Yearly Calendar** tab, change the parameters for yearly calendar. Press **Change** button to change holidays for yearly calendar.
 - (3) Press **OK** button to confirm the changes, press **Cancel** button to discard the changes.
3. In XLCalendar window, press **Save** button to save the parameters.

7.2 Modifying calendar templates

1. In XLCalendar, select the calendar template file, and press **Open** button to open the calendar template file. You can modify the calendar template as you like.
2. In general, you should modify the calendar parameters after you modified the calendar template file.

7.3 Adding your own calendars

Using XLCalendar, you can add your own calendars. To add a calendar, you should do as follows:

1. Create a calendar template file

Create a calendar template file using Microsoft Excel, and put the template file into the template folder. The template folder is the template under the data folder. For more detail information about the data folder, refer to “Directories and Files” in this document.

2. Modify the calendar template file

In XLCalendar, select the calendar template file you have created, press **Open** button to open and modify the calendar template file.

3. Modify and save parameters

In XLCalendar, select the calendar template file you have created. Press **Modify** button to change the parameters. Press **Save** button to save the parameters. The parameters are saved in the parameter file under the template folder.

4. Generate and check the calendar

Press **Generate** button to generate the calendar. You can repeat 2-4 steps until you are satisfied with the calendar.

7.4 Adding your holiday files

You can create your own holiday files. For example, you can create a holiday file for your country. Or you can create a holiday file for your family and friend. In your own holiday file, you can add your wedding anniversary, the birthday of your wife or husband, the birthday of your baby or other special events.

To add a holiday file, you should create a holiday file using a text editor, and put the holiday file into the holiday file folder. The folder of the holiday files is the holiday under the data folder. For more detail information about the format of holiday file, refer to “Holiday File” in this document.

7.5 Adding month names and weekday names

You can add month names and weekday names as you like. To add a name list of month or weekday, open the XLCalendar.ini, and add an entry in the [MonthName] section or [WeekdayName] section. For more detailed information about the format of XLCalendar.ini, refer to “XLCalendar.ini” in this document.

Chapter 8 License and Support

8.1 License

Your Agreement to This License

You should carefully read the following terms and conditions before using, installing, copying, or distributing this software. Your use, installation, copying, or distribution of XLCalendar indicates your acceptance of this agreement ("License").

GRANT OF LICENSE

You may install and use an unlimited number of copies of the software. You may reproduce and distribute an unlimited number of copies of the software, provided that each copy shall be a true and complete copy, including all copyright and trademark notices.

You may not reverse engineer, decompile, or disassemble the software. You are specifically prohibited from charging, or requesting donations without permission from the author.

COPYRIGHT

All title and copyrights in and to the software, the documentation are owned by the author. The software is protected by copyright laws and international treaty provisions.

NO WARRANTY

THE SOFTWARE IS DISTRIBUTED "AS IS". NO WARRANTY OF ANY KIND IS EXPRESSED OR IMPLIED. THE AUTHOR WILL NOT BE LIABLE FOR DATA LOSS, DAMAGES, LOSS OF PROFITS OR ANY OTHER KIND OF LOSS WHILE USING OR MISUSING THIS SOFTWARE.

8.2 Support and Contact

If you want to learn more about XLCalendar or our other products, please go to our web site at <http://www.ljzsoft.com>.

If you encounter any problems in usage of XLCalendar, and need the technical support, please send an email to support@ljzsoft.com.

If you have any comments or suggestion on XLCalendar, or want to send us your calendar templates or holiday files, please send an email to feedback@ljzsoft.com. We sincerely appreciate it.